

# EVV Implementation Survey – DRAFT

*Effective January 1, 2021, EVV requires States to electronically collect service delivery information for personal care services to verify service type, individual receiving the service, date of service, location of service delivery, individual providing the service, begin and end time of the service*

- Survey Monkey ([www.surveymonkey.com](http://www.surveymonkey.com)) was used to conduct a survey of providers and vendors regarding EVV readiness from 6/1/20 through 6/19/20
  - The survey was sent out via the EVV Listserv, eMedNY Provider Listservs and announced on the bi-weekly Technical Assistance Calls
  - Participants were directed to questions tailored to different respondent types
  - 266 completed the survey
- The following Organization types responded: **(Note may include duplicate responses from the plans)**

<u>Answer Choices</u>		<u>Responses</u>
Provider	58.65%	156
EVV Vendor	9.77%	26
MCO	25.56%	68
Verification Organization	0.75%	2
Other	<u>5.26%</u>	<u>14</u>
Answered		266



# EVV Survey Overview - DRAFT

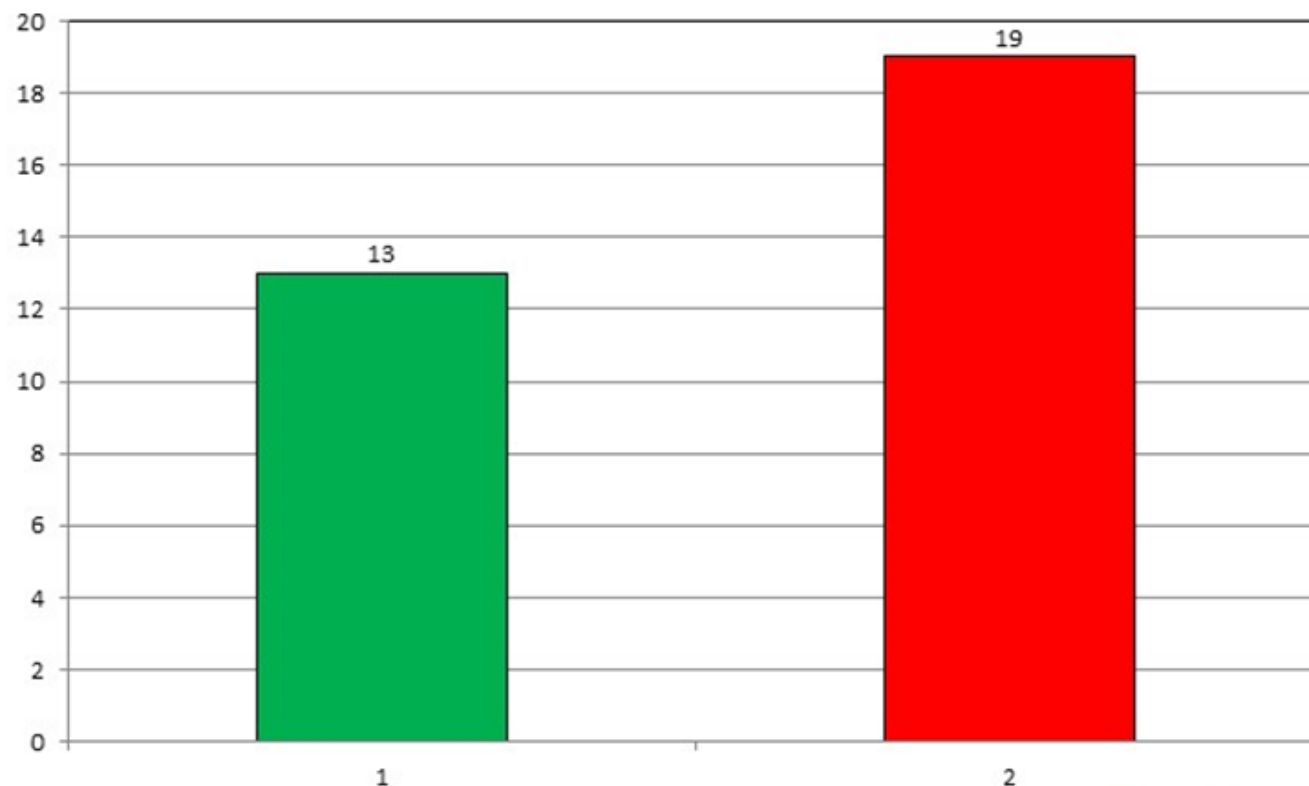
- 47% of Providers that responded indicated that they are already utilizing an EVV system, or something similar, that meets the requirements of the 21<sup>st</sup> Century Cures Act
  - 25% of Providers are in the process of implementing a solution
  - 28% are currently researching options
- 56% of Providers that indicated that they are using an EVV System, have the ability to transmit data via a web service to eMedNY
- 22 out of 23 EVV Vendors indicated that they have the ability to transmit via a web service using REST-API

# MCO Survey Questions

Are you considering arranging with your participating providers to submit EVV data to eMedNY on their behalf?

## Results

<u>Answer Choices</u>	<u>Responses</u>	
Yes	40.63%	13
No	<u>59.38%</u>	<u>19</u>
Answered		32



# MCO Survey Questions

Do you currently receive EVV data from your participating providers?

## Results

### Answer Choices

Yes, but not all the required elements.

Yes, we already gather all the required data elements.

No

### Responses

9.38% 3

6.25% 2

8.44% 27

Answered 32

